

1922 **100** 2022

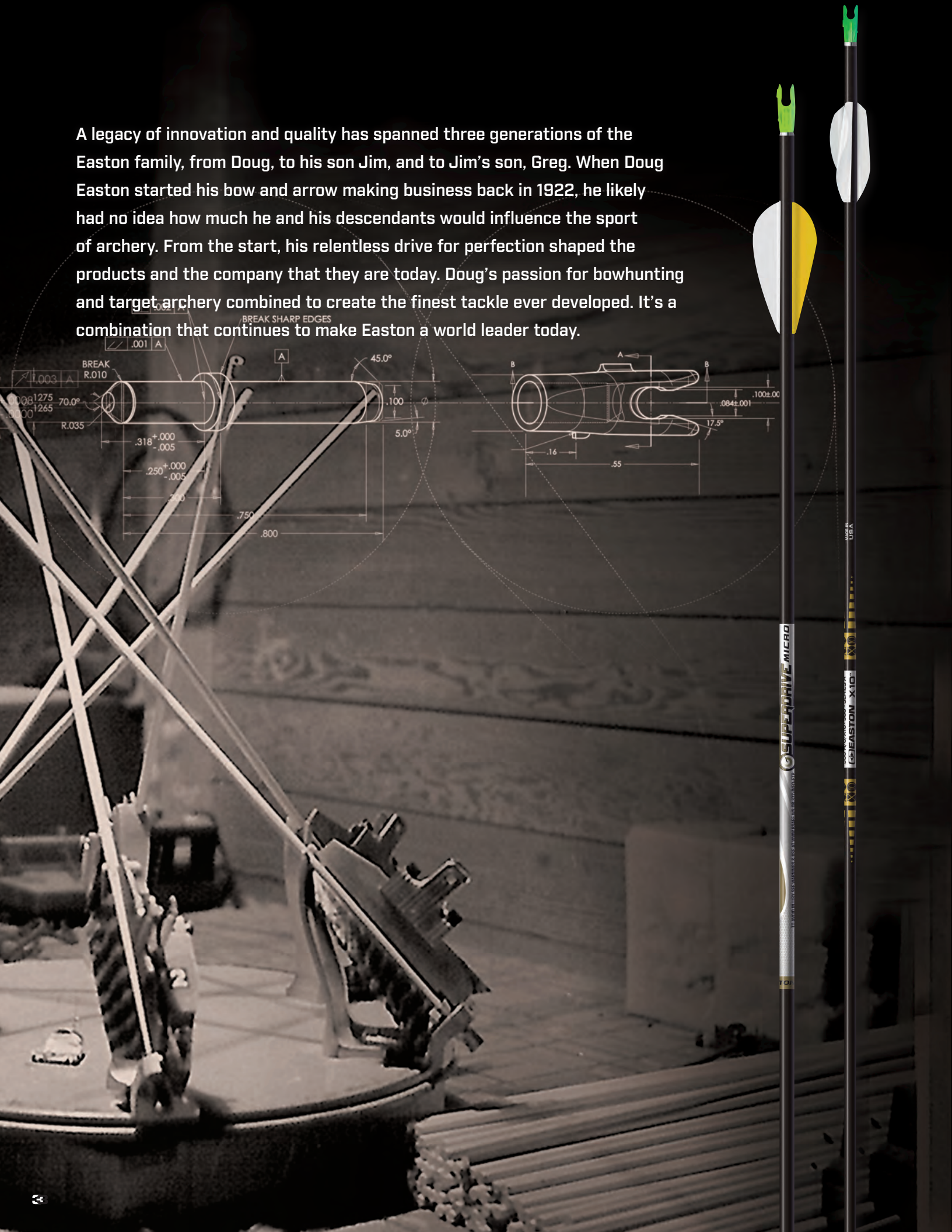
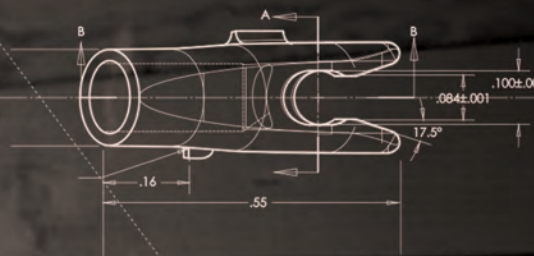
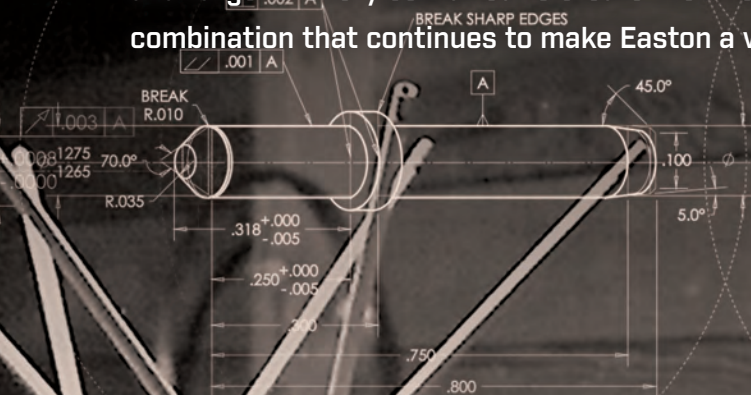


EASTON
TARGET 2022

100 YEARS INNOVATION INTEGRITY LEADERSHIP



A legacy of innovation and quality has spanned three generations of the Easton family, from Doug, to his son Jim, and to Jim's son, Greg. When Doug Easton started his bow and arrow making business back in 1922, he likely had no idea how much he and his descendants would influence the sport of archery. From the start, his relentless drive for perfection shaped the products and the company that they are today. Doug's passion for bowhunting and target archery combined to create the finest tackle ever developed. It's a combination that continues to make Easton a world leader today.



X10™

ALUMINUM CARBON

USED TO WIN EVERY OLYMPIC TITLE SINCE 1996



- High-strength carbon fiber bonded to a 7075 alloy core

Straightness: $\pm .001"$

Weight tolerance: ± 0.5 grains

Barreled design

Components sold separately



RECOMMENDED COMPONENTS



X10 Ballistic Tungsten Break-off Point
[100-120, 100-140 gr.] Fits all sizes.



X10 Stainless Steel Break-off point
[80-100, 100-120 gr.] Fits all sizes.



X10 Pin™
[8 gr.]



Pin™ Nock
[2 gr.]



X10 Over Nock™
[8 gr.]



G Pin™ Nock (compound)
[4 gr.]

Spine	Shaft Weight GPI	Shaft O.D. Inches	Stock Length Inches	Front Max Trim Inches	X10 Pin Fitment	X10 Point Fitment
325	9.2	.221	34.25	6.0	#1	All
350	8.8	.218	34	6.0	#1	All
380	8.9	.215	33.75	6.5	#1	All
410	8.5	.212	33.75	5.5	#1	All
450	8.1	.209	33.50	5.5	#1	All
500	7.8	.206	32	4.0	#1	All
550	7.5	.203	31	3.5	#1	All
600	7.0	.200	30	3.5	#1	All
650	6.8	.197	29	3.5	#1	All
700	6.7	.194	29	3.5	#1	All
750	6.4	.191	29	3.5	#1	All
830	6.2	.188	28.5	No Limit	#1	All
900	5.8	.185	28	No Limit	#1	All
1000	5.3	.182	28	No Limit	#1	All

1 Due to the barrel design of the X10, the weight is an average grains-per-inch of a 29" shaft. Shaft weight is slightly heavier in the larger diameter center and lighter toward the tapered ends. One inch of shaft cut from the point end typically weighs 6-7 grains.

2 Nominal O.D. at mid-point of shaft. Ends are smaller.

3 Recommended that no more than these lengths be cut from the front of the shaft.

X10TM PROTOURTM

ALUMINUM CARBON

Lightweight, high-modulus carbon fiber bonded to a 7075 alloy core

Straightness: $\pm .001"$

Weight tolerance: ± 0.5 grains

Tapered design

Designed for compound

Components sold separately



RECOMMENDED COMPONENTS



X10 Ballistic Tungsten Break-off Point
(100-120, 100-140 gr.) Fits all sizes.



X10 Stainless Steel Break-off point
(80-100, 100-120 gr.) Fits all sizes.



X10 PinTM
(8 gr.)



PinTM Nock
(2 gr.)



G PinTM Nock (compound)
(4 gr.)

Spine	Shaft Weight GPI	Shaft O.D. Inches	Stock Length Inches	Front Max Trim Inches	X10 Pin Adapter Fitment	X10 Point Fitment
340	8.8	.213	34	7.0	#2	All
380	8.4	.207	34	7.0	#2	All
420	8.0	.202	33.75	6.5	#2	All
470	7.6	.198	33.75	6.0	#2	All
520	7.3	.194	32	5.5	#2	All
570	6.9	.191	31	5.0	#2	All
620	6.7	.188	30	4.5	#2	All
670	6.5	.186	29.75	4.0	#2	All
720	6.2	.183	29.75	No Limit	#2	All
770	6.0	.181	29	No Limit	#2	All

¹ Due to the taper design of the X10 Pro Tour, the grain weight-per-inch shown is an average weight-per-inch of a 29" shaft. Shaft weight is slightly heavier toward the larger-diameter nock end and lighter toward the tapered front end. One inch of shaft cut from the point end typically weighs 6-7 grains.

² Nominal O.D. at mid-point of shaft. Front end is smaller.

³ Recommended that no more than these lengths be cut from the front of the shaft.



A/C/E®

4MM ALUMINUM CARBON



- High-strength carbon fiber bonded to a 7075 alloy core

Straightness: $\pm .0015"$

Weight tolerance: ± 0.5 grains

Barreled design

Components sold separately



RECOMMENDED COMPONENTS



4MM HL Stainless Steel Break-off Point
[80 - 130 gr.]



4MM Pin™
[9 gr.]



Pin™ Nock
[2 gr.]



4MM G Nock™
[7 gr.]



G Pin™ Nock (compound)
[4 gr.]



4MM Microlite™ Nock
[6 gr.]

Spine	Shaft Weight GPI	Shaft O.D. Inches	Stock Length Inches	Max Trim Inches	4MM HL Point Fitment	4MM Point Fitment	4MM Pin Fitment
370	7.9	.230	32.62	4.0	#1	#1	#1
400	7.5	.230	32.62	4.0	#1	#1	#1
430	7.0	.224	32.62	5.5	#1	#1	#1
470	6.8	.223	32.62	6.5	#1	#1	#1
520	6.7	.216	31.62	4.5	#1	#1	#1
570	6.3	.216	31.62	10.0	#1	#1	#1
620	6.1	.214	30.62	No Limit	#1	#1	#1
670	5.9	.212	30.62	No Limit	#1	#1	#1
720	6.4	.215	29.62	6.0	#1	#1	#1
780	6.0	.216	29.62	No Limit	#1	#1	#1
850	5.7	.213	28.62	No Limit	#1	#1	#1
920	5.8	.213	28.62	9.5	#1	#1	#1
1000	5.7	.213	28.62	No Limit	#1	#1	#1
1100	5.1	.205	28.62	No Limit	#1	#1	#1
1250	5.1	.205	28.62	No Limit	#1	#1	#1

All sizes use: 4MM HL Point 80-130 grain #1 • 4MM ML Point 60-80 grain • 4MM Pin Adapter #1

PROCOMP™

4MM ALUMINUM CARBON

- High-strength carbon fiber bonded to a 7075 alloy core

Straightness: $\pm .0015"$

Weight tolerance: ± 0.5 grains

Parallel design

Components sold separately



RECOMMENDED COMPONENTS



4MM HL Stainless Steel Break-off Point
[80 - 130 gr.]



4MM Pin™
[9 gr.]



Pin™ Nock
[2 gr.]



4MM G Nock™
[7 gr.]



G Pin™ Nock (compound)
[4 gr.]



4MM Microlite™ Nock
[6 gr.]

Spine	Shaft Weight GPI	Shaft O.D. Inches	Stock Length Inches	4MM HL Point Fitment	4MM Pin Fitment
250	10.8	.245	34	#4	#4
300	9.5	.236	33.63	#4	#4
340	8.9	.231	33.63	#4	#4
380	8.3	.227	32.63	#3	#4
420	7.8	.224	32.63	#3	#3
470	7.3	.220	32.63	#2	#3
520	7.0	.217	32.63	#2	#2
570	6.6	.215	32.63	#2	#2
610	7.3	.218	31	#2	#2
660	6.9	.215	30.75	#2	#2
710	6.5	.213	30.5	#2	#2
810	6.1	.209	30	#1	#2
880	5.9	.207	29.5	#1	#2
1000	5.5	.204	29	#1	#1
1150	5.5	.203	28.5	#1	#1



AVANCE™

4MM CARBON



- 100% carbon construction
- Straightness $\pm .0025"$
- Weight tolerance ± 1 grain
- Components sold separately
- Parallel design



RECOMMENDED COMPONENTS



4MM ML Stainless Steel Point
(60-80, 70-90, 90-110, 100-120 gr.)



4MM Pin
(9 gr.)



Pin™ Nock
(2 gr.)



4MM Microlite™ Nock
(6 gr.)



4MM G Nock™
(7 gr.)



G Pin™ Nock (compound)
(4 gr.)

Spine	Shaft Weight	Shaft OD	Stock Length	4MM ML Point Fitment				Nock Pin Adapter Fitment
	GPI	Inches	Inches	100-120 gr	90-110 grain	70-90 grain	60-80 grain	4MM Pin
340	8.8	.240	33.25	#4				#4
400	7.9	.234	33.00	#4				#4
450	7.4	.230	32.75	#4				#4
500	6.9	.227	32.50	#4				#4
550	6.5	.224	32.25		#3			#3
600	6.5	.224	32.00		#3			#3
660	6.2	.220	31.75		#3			#3
730	5.7	.217	31.25		#3			#2
810	5.5	.215	31.00			#2		#2
900	5.2	.211	30.25			#2		#2
1000	4.9	.209	30.00			#2		#2
1150	4.9	.208	29.25			#2		#2
1400	4.2	.205	29.00				#1	#1
1600	3.8	.202	28.75				#1	#1
1800	3.6	.200	28.50				#1	#1
2000	3.4	.198	28.25				#1	#1

AVANCE™

SPORT

4MM CARBON

- 100% carbon construction

Straightness $\pm .005"$

Weight tolerance ± 1 grain

Parallel design

All fletched shafts include points & nocks

Bare shaft components sold separately



RECOMMENDED COMPONENTS



4MM ML Stainless Steel Point
(60-80, 70-90, 90-110, 100-120 gr.)



4MM Pin
(9 gr.)



Pin™ Nock
(2 gr.)



4MM Microlite™ Nock
(6 gr.)



4MM G Nock™
(7 gr.)



G Pin™ Nock (compound)
(4 gr.)

Spine	Shaft Weight	Shaft OD	Stock Length	4MM ML Point Fitment				Nock Pin Adapter Fit
	GPI	Inches	Inches	100-120 gr	90-110 grain	70-90 grain	60-80 grain	4MM Pin
340	8.8	.240	33.25	#4				#4
400	7.9	.234	33.00	#4				#4
450	7.4	.230	32.75	#4				#4
500	6.9	.227	32.50	#4				#4
550	6.5	.224	32.25		#3			#3
600	6.5	.224	32.00		#3			#3
660	6.2	.220	31.75		#3			#3
730	5.7	.217	31.25		#3			#2
810	5.5	.215	31.00			#2		#2
900	5.2	.211	30.25			#2		#2
1000	4.9	.209	30.00			#2		#2
1150	4.9	.208	29.25			#2		#2
1400	4.2	.205	29.00				#1	#1
1600	3.8	.202	28.75				#1	#1
1800	3.6	.200	28.50				#1	#1
2000	3.4	.198	28.25				#1	#1



INSPIRE™

CARBON

- High-strength carbon fiber

Available in ten sizes

Parallel design

All fletched shafts include points & nocks

- RECOMMENDED COMPONENTS



4MM Zinc Point
[70 gr.]



4MM G Nock™
[7 gr.]



5MM X Nock™
[9 gr. 570 and 630 spines only]



5MM Zinc Point
[75 gr. 570 and 630 spines only]



4MM Microlite™ Nock
[6 gr.]

630/570 sizes use 5MM components

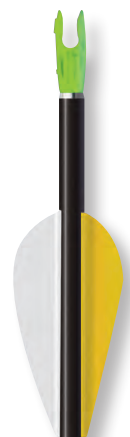
Spine	Shaft Weight GPI	Shaft O.D. Inches	Stock Length Inches	Nock Fitment	Zinc Point Fitment
570	8.2	.256	31.5	5MM	5MM #1
630	7.9	.254	30.5	5MM	5MM #1
750	8.1	.227	29.5	4MM	4MM #2
900	7.7	.223	28.5	4MM	4MM #2
1000	7.2	.220	27.5	4MM	4MM #2
1200	7.2	.220	27.25	4MM	4MM #2
1400	4.2	.205	29	4MM	4MM #1
1600	3.8	.202	28.75	4MM	4MM #1
1800	3.6	.200	28.5	4MM	4MM #1
2000	3.4	.198	28.25	4MM	4MM #1



NEW

SUPERDRIVE™

CARBON MICRO



- Multi-layer wrapped 100% high velocity carbon-fiber construction

4mm parallel design

Specifically engineered for outdoor competition

Weight Tolerance: +/- 1.0 grain

Straightness +/- .002"

RECOMMENDED COMPONENTS



4MM ML Stainless Steel Point
(60-80, 70-90, 90-110, 100-120 gr.)



4MM Pin
(9 gr.)



Pin™ Nock
(2 gr.)



4MM Microlite™ Nock
(6 gr.)



4MM G Nock™
(7 gr.)



G Pin™ Nock (compound)
(4 gr.)

Spine	Shaft Weight	Shaft OD	Stock Length	4MM ML Point Fitment	Nock Pin Adapter Fitment
	GPI	Inches	Inches	100-120 gr	4MM Pin
325	8.1	.233	33.25	#4	#4
375	7.4	.228	33.00	#3	#4
425	6.8	.224	32.75	#3	#3
475	6.4	.221	32.50	#2	#3
525	6.1	.218	32.25	#2	#3
575	5.9	.217	32.00	#2	#2
625	5.7	.216	31.75	#2	#2
675	5.6	.215	31.50	#2	#2
750	5.5	.214	31.25	#2	#2
850	5.3	.213	31.00	#1	#2
950	5.1	.210	30.75	#1	#2

SUPERDRIVE™

CARBON

19

- High-strength carbon fiber

Straightness: $\pm .002"$

Weight tolerance: ± 0.5 grains

Outside diameter: 19/64" (7.5mm)

Inserts, points, nocks & pin adapter—sold separately

G UNI bushings—included

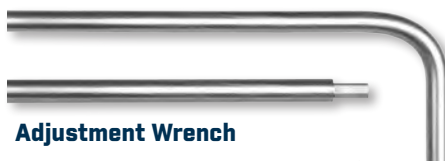
RECOMMENDED COMPONENTS



**Superdrive 19
Adjustable Point**
(90 gr.)



**Adjustable Point System
Weight Module**
(10, 20 50 gr.)



Adjustment Wrench



SD 19™ 4MM Bushing
(6 gr.)



4MM Microlite™ Nock
(6 gr.)



4MM G Nock™
(7 gr.)



SD 19™ Pin
(11 gr.)



Pin™ Nock
(2 gr.)



G Pin™ Nock (compound)
(4 gr.)

Spine	Shaft Weight GPI	Shaft O.D. Inches	Stock Length Inches
330	8.4	.281	33
380	7.8	.278	32
460	7.0	.273	31



SUPERDRIVE™

CARBON

23



Multi-layer wrapped carbon fiber

Polished black carbon finish

Straightness: $\pm .002"$

Weight tolerance: ± 1.0 grain

Outside diameter: 23/64" (9.3mm)

World Archery compliant outside diameter

Inserts, points, nocks and pin adapter—sold separately

Super or G UNI Bushings—included

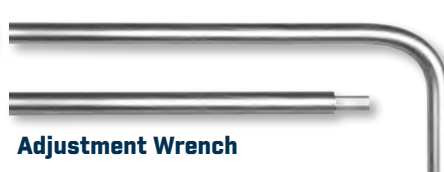
RECOMMENDED COMPONENTS



**SD 23™
Adjustable Point**
[90 gr.]



**Adjustable Point System
Weight Module**
[10, 20 50 gr.]



Adjustment Wrench



**SD 23™
One-piece Point**
[100 & 125 gr.]



**SD 23™ 4MM
Bushing**
[18 gr.]



4MM G Nock™
[7 gr.]



**6.5MM MicroLite™
Super Nock™**
[8 gr.]



SD 23™ Insert
[40 gr.]



**SD 23™ 6.5MM
Bushing**
[19 gr.]



Super 3D Nock™
[13 gr.]



4MM Microlite™ Nock
[6 gr.]



SD 23™ Pin
[14 gr.]



Pin™ Nock
[2 gr.]



G Pin™ Nock
[compound]
[4 gr.]

Spine	Shaft Weight GPI	Shaft O.D. Inches	Stock Length Inches
325	7.4	.361	33.25
375	6.9	.359	32
475	6.4	.356	31.5

SUPERDRIVE™

CARBON

25



- Straightness: $\pm .002"$
- Weight tolerance: ± 1.0 grain
- Outside diameter: 25/64"
- Specifically engineered for indoor and 3D
- Multi-layer wrapped carbon fiber
- Super and G UNI bushings—included
- Inserts, points, nocks and pin adapter—sold separately

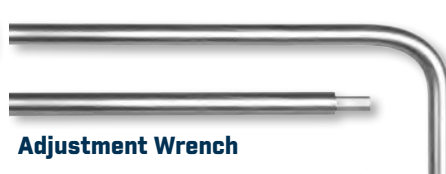
RECOMMENDED COMPONENTS



**SD 25™
Adjustable Point**
(90 gr.)



**Adjustable Point System
Weight Module**
(10, 20 50 gr.)



Adjustment Wrench



**SD 25™
One-piece Point**
(100 & 125 gr.)



**SD 25™ 4MM
Bushing**
(18 gr.)



4MM G Nock™
(7 gr.)



**6.5MM MicroLite™
Super Nock™**
(8 gr.)



**SuperDrive 25
Insert**
(50 gr.)



**SD 25™ 6.5MM
Bushing**
(19 gr.)



Super 3D Nock™
(13 gr.)



4MM Microlite™ Nock
(6 gr.)



SD 25™ Pin
(14 gr.)



Pin™ Nock
(2 gr.)



G Pin™ Nock
(compound)
(4 gr.)

Spine	Shaft Weight GPI	Shaft O.D. Inches	Stock Length Inches
290	7.8	.396	32

SUPERDRIVE™

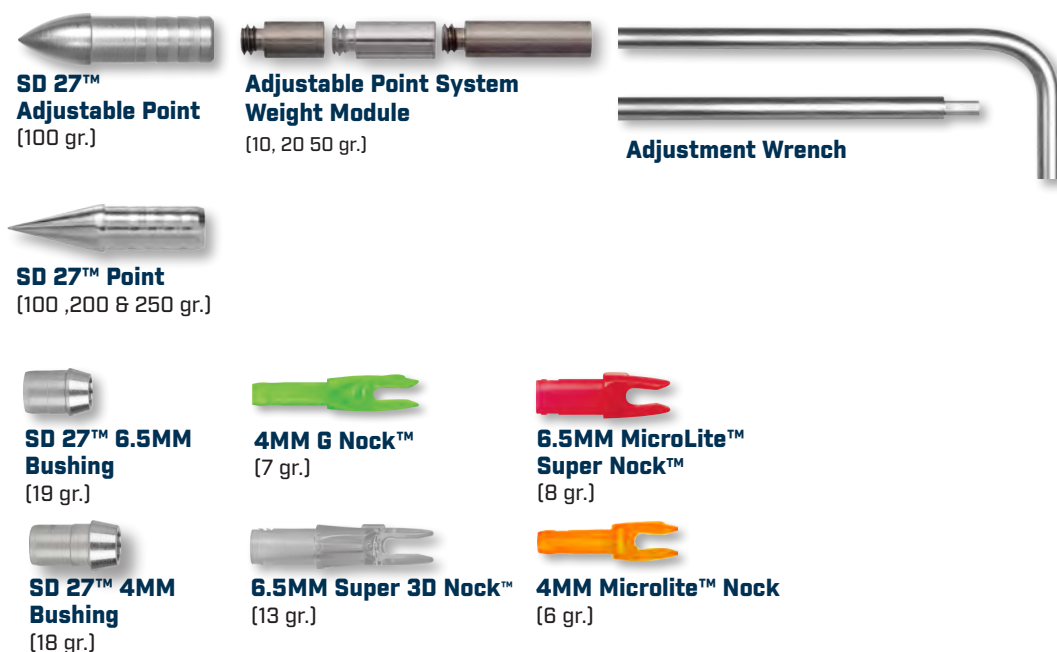
+MATCH GRADE

CARBON

27

- High-strength carbon fiber
- Polished black carbon finish
- Straightness: $\pm.005$ "/Matchgrade $\pm.002$ "
- Weight tolerance: ± 1.0 grains
- Outside diameter: 27/64"
- Points, and nocks—sold separately
- Super or G UNI Bushings—included
- Components—sold separately

RECOMMENDED COMPONENTS



Spine	Shaft Weight GPI	Shaft O.D. Inches	Stock Length Inches
270	9.0	.420	32.125



RX7™

DUAL SPINE ALUMINUM

- Weaker tail section helps recurve clearance

Straightness: $\pm .001"$

Weight tolerance: $\pm 0.75\%$

Thick-wall front end easily copes with tough European target materials

Three spines—525, 475, and 420- in a 21, 22, and World Archery™ Maximum 23 O.D.



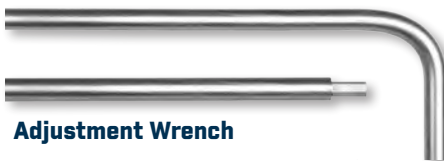
RECOMMENDED COMPONENTS



**Adjustable
Bullet Point**
[100 gr.]



**Adjustable Point System
Weight Module**
[10, 20 50 gr.]



Adjustment Wrench



**6.5MM Super
UNI Bushing®**
[19 gr.]



**6.5MM MicroLite™
Super Nock™**
[8 gr.]



Super 3D Nock™
[13 gr.]

Spine	Shaft Weight GPI	Shaft O.D. Inches	Minimum Stock Length Inches	Point Fitment	Bushing Fitment
23-420	10.4	.365	33.75	2315	2315
22-475	9.7	.348	33.5	2214	2214
21-520	9.3	.328	32.5	2114	2114



VECTOR™

CARBON

- Multi-layer wrapped 100% carbon-fiber construction
- 4mm parallel design
- Straightness checked
- Weight matched
- Factory Fletched with 2" shield-cut feather
- Ready to shoot. Cut to length with nocks & points installed

RECOMMENDED COMPONENTS



4MM G Nock™
[7 gr.]



4MM Zinc Point
[70 gr.]

Spine	Shaft Weight GPI	Shaft OD Inches	Stock Length Inches	4MM Zinc Point 70 gr
600	7.6	.228	32	#2
800	6.2	.219	31	#2
1000	5.4	.214	30	#2
1200	5.1	.211	29	#1
1400	4.2	.206	28	#1



X23™

ALUMINUM

7178-T9 aerospace alloy 2-tone finish

Straightness: $\pm .001"$

Components—sold separately

World Archery Tournament outside diameter compliant

Black point end for better target contrast



RECOMMENDED COMPONENTS



**Adjustable
Bullet Point**

(90 gr.)



**Adjustable Point System
Weight Module**

(10, 20 50 gr.)



Adjustment Wrench



6.5MM Super UNI Bushing®

(19 gr.)



6.5MM MicroLite™ Super Nock™

(8 gr.)



6.5MM Super 3D Nock™

(13 gr.)

Size	Spine	Shaft Weight GPI	Shaft O.D. Inches	Minimum Stock Length Inches	6.5 Bushing Weight (grains)
2312	.423	9.5	.363	31.75	11
2314	.391	10.8	.357	32.25	10
2315	.342	11.8	.365	32.6	11
2318	.300	13.7	.365	34.75	11



X27™

ALUMINUM

- 7178-T9 aerospace alloy 2-tone finish
- Straightness: ±.001"
- Components—sold separately
- Black point end for better target contrast



RECOMMENDED COMPONENTS



**Adjustable
Bullet Point**



**Adjustable Point System
Weight Module**
(10, 20 50 gr.)



Adjustment Wrench



6.5MM Super UNI Bushing®
(19 gr.)



6.5MM MicroLite™ Super Nock™
(8 gr.)



6.5MM Super 3D Nock™
(13 gr.)

Size	Spine	Shaft Weight GPI	Shaft O.D. Inches	Minimum Stock Length Inches	6.5 Bushing Weight (grains)
2712	.260	11.3	.420	33	19



X7ECLIPSE™

ALUMINUM

- 7178-T9 aluminum alloy
- Hard-anodized black finish
- Straightness: $\pm .001"$
- Weight tolerance: $\pm .75\%$
- G-UNI/Super UNI bushing installed
- Nocks and points sold separately
- Sizes 1514 through 2214 are World Archery compliant



RECOMMENDED COMPONENTS



NIBB Point



Bullet Point



RPS Insert



4MM G-UNI Bushing®
(for sizes 1914 and smaller)



6.5MM Super UNI Bushing®
(19 gr.)



4MM G Nock™
(for sizes 1914 and smaller) [7 gr.]



4MM MicroLite™ Nock
[6 gr.]



6.5MM MicroLite™ Super Nock™
[8 gr.]



6.5MM Super 3D Nock™
[13 gr.]

Size	Spine	Shaft Weight GPI	Shaft O.D. Inches	Minimum Stock Length Inches	4MM Bushing Weight (Grains)	6.5MM Bushing Weight (Grains)	Bullet Point Weight (grains)	NIBB Point Weight (grains)	Insert Weight (grains)	Screw-In Point Size
2613	.265	11.5	.414	34.75	NA	17	150	NA	58	3/8
2512	.321	10.3	.398	34.5	NA	15	100	108	52	11/32
2413	.365	10.5	.372	34	NA	12	100	110	40	11/32
2214	.425	10.4	.318	33.38	NA	9	100	103	NA	NA
2213	.458	9.9	.344	33.5	NA	9	100	88	30	11/32
2114	.510	9.9	.328	32.5	NA	7	100	78	25	5/16
2014	.579	9.6	.314	31.63	NA	5	NA	71	NA	NA
1914	.658	9.3	.300	30.88	9	NA	NA	64	NA	NA
1814	.799	8.6	.284	29.88	8	NA	NA	60	NA	NA
1714	.963	8.1	.268	29.38	7	NA	NA	56	NA	NA
1614	1.153	7.7	.251	28.25	5	NA	NA	51	NA	NA
1514	1.379	6.8	.244	26.5	5	NA	NA	61	NA	NA



XX75

PLATINUM® PLUS

ALUMINUM

- 7075-T9 aluminum alloy
- Hard-anodized finish
- Straightness: $\pm .002"$
- Weight tolerance: $\pm 1\%$
- Super or G UNI bushings—installed
- Components—sold separately



RECOMMENDED COMPONENTS



NIBB Point
[00 gr.]



Bullet Point



6.5MM Super UNI Bushing®
[19 gr.]



MicroLite™ Super Nock® 6.5MM
[8 gr.]



6.5MM Super 3D Nock™ [13 gr.]



4MM G-UNI Bushing®
[for sizes 1914 and smaller]



RPS Insert

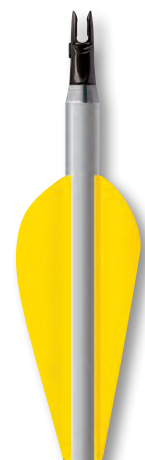


4MM Micro Nock
[6 gr.]



4MM G Nock™
[for sizes 1914 and smaller] [7 gr.]

Size	Spine	Shaft Weight GPI	Shaft O.D. Inches	Minimum Stock Length Inches	Bushing Weight 4MM (Grains)	Bushing Weight 6.5MM (Grains)	Bullet Point Weight (grains)	NIBB Point Weight (grains)	Insert Weight (grains)	Screw-In Point Size
2213	.458	9.8	.344	30.5	NA	15	100	108	52	11/32
2114	.510	9.9	.328	30	NA	15	100	108	52	11/32
2016	.531	10.6	.312	31	17	12	100	110	40	11/32
2013	.610	9.0	.313	32	14	9	100	103	NA	NA
1916	.623	10.0	.297	30	13	9	100	88	30	11/32
1913	.733	8.3	.298	31	14	9	100	88	30	11/32
1816	.756	9.3	.281	29	11	7	100	78	25	5/16
1716	.880	9.0	.266	29	9	NA	NA	64	NA	NA
1616	1.079	8.4	.250	27.5	7	NA	NA	56	NA	NA
1516	1.403	7.3	.234	26.75	5	NA	NA	51	NA	NA
1416	1.684	7.2	.219	26.25	5	NA	NA	61	NA	NA



XX75 PLATINUM PLUS

NEW XX75TM

JAZZ[®]

ALUMINUM

- 7075 aerospace alloy
- Hard-anodized finish
- Straightness: $\pm .005"$
- Weight tolerance: $\pm 2\%$
- Strength (psi): 90,000
- Bushing Installed
- Components—sold separately



RECOMMENDED COMPONENTS



NIBB Point



Economy Point



Bullet Point



RPS Insert



4MM G-UNI Bushing[®]
[for sizes 1914 and smaller]



4MM G NockTM
[for sizes 1916 and smaller] [7 gr.]

Size	Spine	Shaft Weight GPI	Shaft O.D. Inches	Minimum Stock Length Inches	Nock Size	Bullet Point Weight (grains)	Economy Point Weight (grains)	NIBB Point Weight (grains)	Insert Weight (grains)	Screw In Point Size
2016	.531	10.6	.312	32	6.5MM	90	70	80	20	5/16
1916	.623	10.0	.297	31	4MM	82	65	72	16	5/16
1816	.756	9.3	.281	30	4MM	74	60	63	12	9/32
1716	.880	9.0	.266	29	4MM	68	55	60	10	17/64
1616	1.079	8.4	.250	28.5	4MM	63	50	56	NA	NA
1516	1.403	7.3	.234	27.5	4MM	54	45	48	NA	NA
1416	1.684	7.2	.219	27	4MM	52	40	46	NA	NA
1214	2.501	5.9	.197	26.5	4MM DIRECT FIT	45	NA	NA	NA	NA



XX75 JAZZ

GENESIS™

ALUMINUM

7075 aerospace alloy

Hard-anodized

Straightness: $\pm .005"$

Weight tolerance: $\pm 2.5\%$

Strength (psi): 90,000

UNI bushing, nock, and point—installed



National Archery in the Schools Program

The ONLY arrow approved for all NASP® tournaments and events.
Available in black, purple, green, and teal.



RECOMMENDED COMPONENTS



Genesis Point



4MM N Nock™
[7 gr.]



UNI Bushing®
[18 gr.]

Size	Spine	Shaft Weight GPI	Shaft O.D. Inches	Minimum Stock Length Inches
1820	0.592	12.2	.282	30



1820
GENESIS
EASTON
MADE IN THE USA

EZ FLETCH™

Fletching Tools

(A) SMALL DIAMETER MULTI-KIT

- Includes 2" Mini Helical tool and extra set of straight offset arms
- For all arrow materials and diameters smaller than 20/64"



(B) SMALL DIAMETER 2" MINI HELICAL TOOL

- Includes 2" Mini Helical tool
- For all arrow materials and diameters smaller than 20/64"



(C) LARGE DIAMETER MULTI-KIT

- Includes 5" Straight-Offset Jig and extra set of 2" Mini-Helical arms
- For all arrow materials and diameters larger than 20/64"



(D) LARGE DIAMETER 5" STRAIGHT OFF-SET TOOL

- Includes 5" Straight-Offset Jig
- For all arrow materials and diameters larger than 20/64"



VANES

All weights are within ±0.5 grain

2" BULLY™ VANES BY BOHNING

Ultra-stiff design for high speed stability



Size	Length (in)	Height (in)	Weight (grain)	Colors	
200	2.00	.568	6.5	<div> <div>● Fire Orange</div> <div>● Bright Green</div> </div> <div> <div>● Red</div> <div>● Yellow</div> <div>○ White</div> </div>	100 Ct. 36Ct.

BTV 3" VANES™ BY AAE



Size	Length (in)	Height (in)	Weight (grain)	Colors	
300	3.00	.500	10	<div> <div>● Yellow</div> <div>● Bright Green</div> </div> <div> <div>● Red</div> <div>● Fire Orange</div> </div>	100 Ct. 36Ct.

EZ Fletch is a trademark of Arizona Rim Country, Inc.

VANES

DIAMOND HD 3" VANES™ BY BOHNING



Size	Length (in)	Height (in)	Weight (grain)	Colors	Packaging
300	3.00	.500	10	<div> <div>● Bright Green</div> <div>● Yellow</div> <div>● Blue</div> </div> <div> <div>● Red</div> <div>○ White</div> <div>● Orange</div> </div>	100-ct.

DIAMOND VANES™ BY AAE



Size	Length (in)	Height (in)	Weight (grain)	Colors	Packaging
175	1.750	.375	3	<div>● Bright Green</div> <div>● Fire Orange</div>	100-ct.
235	2.375	.375	4	<div>● Sunset Gold</div> <div>○ White</div>	
280	2.875	.500	6	<div>● Yellow</div> <div>● Black</div>	
380	3.875	.500	8	<div>● Hot Pink</div>	

TITE FLIGHT™ VANES BY AAE

Special rib adds stiffness to cut in-flight flutter and noise



Size	Length (in)	Height (in)	Weight (grains)	Colors	Packaging
200	2.00	.330	4	<div>● Hot Pink</div> <div>○ White</div> <div>● Bright Green</div> <div>● Black</div> <div>● Fire Orange</div> <div>● Yellow</div>	100-ct.

SPIN WING VANES™

1.75-inch vanes available in right • Packaging - 50-count bag



Colors ● Black ○ White ● Blue ● Red ● Yellow

Spin Wing Vane is a trademark of Range-O-Matic Archery Company.

STABILIZERS



HALCYON™

- Very low resonance for faster damping and a steadier hold
- Unmatched wind drag resistance
- Class-leading 14MM ultra-high modulus graphite fiber construction
- Windcutter 360 design
- Weights not included

	Main Stabilizers			Side Rods		
Size	27 in-69 cm	30 in-76 cm	33 in-84 cm	10 in-25 cm	12 in-30 cm	15 in-76 cm
Ounces	4.4	4.7	5	2.9	3	3.4
Grams	125.5	133	140	83.1	88.3	96.6

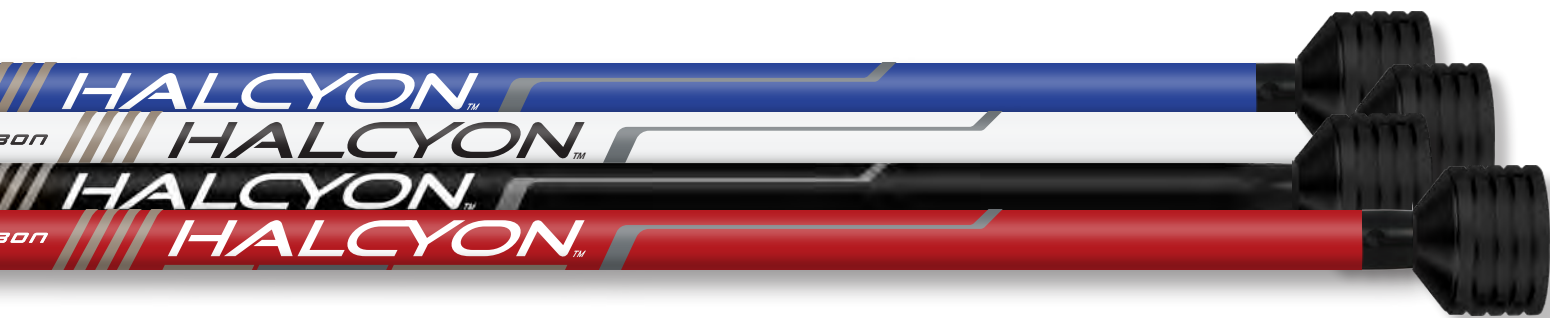


CONTOUR CS™

- Complex unidirectional and cross weave High Modulus Carbon and Ultra High Modulus Graphite construction for extreme stiffness, fast damping rate and a steadier hold for both compound and recurve
- Proven in both compound and recurve top level competition worldwide
- Extremely light weight, greater stiffness to weight ratio than any stabilizer currently available
- Drag reducing Windcutter 360 design
- Weights not included

Includes reusable protective sleeve and 1/4-20 to 5/16-24 adapter.

	Main Stabilizers			Side Rods		
Size	27 in-69 cm	30 in-76 cm	33 in-84 cm	10 in-25 cm	12 in-30 cm	15 in-76 cm
Ounces	4.0	4.3	4.5	2.5	2.6	2.85
Grams	115	122	128	71	74	81



Halcyon stabilizers come with a reusable protective sleeve



Contour CS stabilizers come with a reusable protective sleeve

STABILIZERS



CONTOUR™

- Complex High Modulus Carbon, multi-diameter design
- Faster damping and a steadier hold with less wind drag
- Stiff and light self-damping design ideal for recurve performance
- Weights not included

	Main Stabilizers				Side Rods		
Size	24 in-61 cm	27 in-69 cm	30 in-76 cm	33 in-84 cm	10 in-25 cm	12 in-30 cm	15 in-38 cm
Ounces	3.7	4.0	4.3	4.6	2.5	2.7	2.9
Grams	106	114	123	131	71	75	83



Z-FLEX™

- High stiffness ideal for top level compound and 3D competition
- High Modulus Carbon construction
- Built-in AVRS damping system
- Less aiming float and highly efficient
- Weights not included

	Main Stabilizers				Side Rods		
Size	24 in-61 cm	27 in-69 cm	30 in-76 cm	33 in-84 cm	10 in-25 cm	12 in-30 cm	15 in-38 cm
Ounces	5.8	6.2	6.5	6.9	3.2	3.5	3.9
Grams	164	175	186	196	92	99	111



Z COMP™

- Balanced feel with lower mass and smaller diameter
- High Modulus Carbon construction
- Weights not included

	Main Stabilizers		Side Rods	
Size	27 in-69 cm	30 in-76 cm	10 in-25 cm	12 in-30 cm
Ounces	6.2	6.5	3.2	3.5
Grams	175	186	92	99



- Ultra-stiff design for steady aiming
- AVRS™ damping for active-shock management
- Lowest mass and highest efficiency



Z-Flex stabilizers come with a reusable protective sleeve



- Ultra-stiff design for steady aiming
- Fast-damping high frequency response
- AVRS damping for active-shock management
- 100% high modulus carbon at a smaller 0.600" diameter

STABILIZERS & COMPONENTS



MICROFLEX™

- Balanced feel with lower mass and smaller diameter
- High modulus carbon construction
- Weights not included

Main Stabilizers				Side Rods	
Size	24 in-61 cm	27 in-69 cm	30 in-76 cm	10 in-25 cm	12 in-30 cm
Ounces	5.8	6.2	6.5	3.2	3.5
Grams	164	175	186	92	99



- Ultra-stiff design for steady aiming
- Fast-damping high frequency response
- AVRS damping for active-shock management
- 100% high modulus carbon at a smaller 0.600" diameter

PRO-LINK™ EXTENDER

- Internal stainless steel reinforcement beam with high modulus carbon construction
- Stiffest extension ever made by Easton
- Engineered for extreme reliability

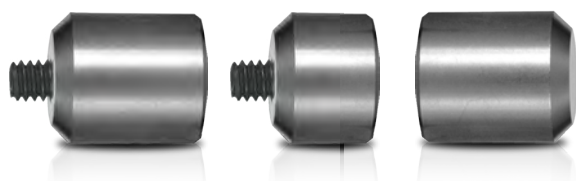
PROLINK Extender			
Size	6 in-15 cm	5 in-13 cm	4 in-10 cm
Ounces	4.6	4.3	4.0
Grams	131	122	113



Pro-link internal steel beam system



VARI-WEIGHTS



	Ounces	Grams
Module	1.5	43
1/2 Module	0.75	21
Cap	1.5	43



FLAT VARI-WEIGHTS 5/16-24 THREAD

	Ounces	Grams
Halcyon/Contour Base	2.0	57
Z Flex Base	2.0	57
1 Oz.	1.0	28.5
2 Oz.	2.0	57
4 Oz.	4.0	114



ALSO AVAILABLE
IN BLACK

MOUNTS

FIXED V-BAR WITH BOLT

- Works with all Easton stabilizer systems
- Black hard-anodize finish
- 35° flat and 35° X 17° down-angle models
- 5/16" stainless-steel connector bolt— included



ADJUSTABLE V-BAR WITH BOLT

- Infinite adjustability
- Machined gears in joint for solid lock-down
- Suitable for compound or recurve bows
- Stainless steel eye bolt included



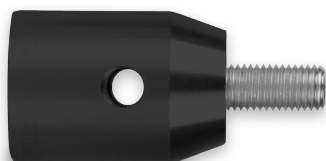
ADJUSTABLE SIDE ROD ADAPTER

- Infinite adjustability
- Machined gears in joint for solid lock-down
- Stainless steel eye bolt included



CONTOUR AND Z-FLEX™ V-BAR CONNECTOR BOLT

- Cleanly interfaces V-bars to extenders or bows
- Flush, nested fit for Contour or Z-Flex rods
- Lightweight aluminum alloy, hard anodized finish
- Thru-hole for wrench lock-down



QUICK DISCONNECT MOUNT

- Stainless steel
- 7075 alloy
- Precision design
- Zero and 10 degree drop models available



TOOLS & SUPPLIES

QUICKBOND™ INSERT ADHESIVE

- Easy to identify orange color
- Impact resistant
- Ready to shoot in 15-30 minutes
- Sizes: 0.5 FL oz.
- HIT approved



CONVENTIONAL BOWSTRING WAX

- Protects bowstring from wind and weather
- Specially formulated for modern bowstring materials



FASTSET™ VANE GEL

- Sizes: 3 gram



CROSSBOW RAIL LUBE

- Full synthetic formula provides maximum lubrication for crossbow rails
- Protects string from damage



3-STEP BOWSTRING MAINTENANCE KIT

- String Cleaner —removes dirt, wax and contaminants from bowstring
- Bowstring Revitalizer—restores color and penetrates to the core of the string for reduced friction and maximum shot life
- Full Synthetic Bowstring Wax—protects longer & better than conventional waxes



WEDGE ARROW PULLER

- Proprietary compound for maximum arrow grip
- Internal-molded sides for improved wet-weather pulling
- Ergonomic wedge shape for comfortable fit



UNIVERSAL NOCK TOOL

- Handy design allows for installation and removal of all nock sizes
- Includes a threaded shank for easy removal of broken nocks



BCY NOCK & PEEP SERVING

- .020" nylon thread perfect for tying nock sets and peep-sights
- Includes 1m red thread and 1m black thread



QUICKBOND™ VANE ADHESIVE

- Ultimate strength
- Bonds in seconds
- Primer Pen compatible
- Sizes: 0.5 FL oz.



QUICKBOND™ VANE PRIMER PEN

- Compatible with all vane adhesives
- Improves bond strength & reduces drying time
- Improves adhesion for hard-to-stick vanes



FLETCH-TITE® PLATINUM

- Size: 22-gram tube



HOT MELT ADHESIVE

- Low temperature
- 3" x 1/2" stick
- Available in 10" shop stick



FULL-SYNTHETIC ARROW LUBE

- Full-synthetic formula for easy arrow extraction
- Scent free, easy to apply
- Suitable for all types of arrows
- Most advanced arrow lube ever created
- Quiver-mount neoprene sleeve included



PUCK ARROW PULLER

- Proprietary high-grip compound for maximum arrow grip
- Flat puck design for maximum grip leverage
- Best for tight single spot groups



BROADHEAD WRENCH

- For safe installation and removal of broadheads from arrows



BCY #24 D-LOOP ROPE

- The professionals' choice and #1 choice of archers worldwide
- Stiff-braided POLY fibers
- Good, consistent burn
- Available in 1m lengths and 50ft spools



Fletch-Tite® is a registered trademark of Bohning Company LTD

TOOLS & SUPPLIES

ELITE NOCK AND D-LOOP PLIERS

- Maximizes mechanical advantage for tightest possible D-loops
- Patented dual-jaw design
- Convenient and versatile archery tool
- Six tools in one



PRO ARCHERY NEEDLE-NOSE PLIERS

- A must have for any serious bow mechanic
- Rubber-coated handle
- Needle-nose plier design with archery specific features for D-loop stretching and hot-melt point installation



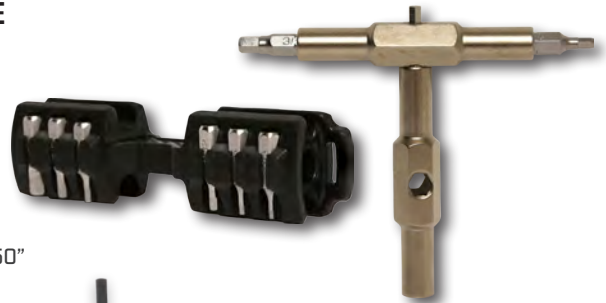
BCY™ POLYGRIP CENTER SERVING THREAD

- .020" polyester thread perfect for center serving
- 75-yard spool



ARCHERY OMNI TOOL BY FIX-IT STICKS® - 17 PIECE

- Integrates 17 of the most popular Standard & Metric Hex, and Star bit sizes into the most compact archery tool ever produced
- Snaps together in a T-shape for leverage
- Compatible with any standard 1/4" drive bit
- Breaks down for portability but durable enough for shop use
- Perfect for servicing all types of compound and recurve bows, cam modules, and accessories
- Includes the following bit sizes:
Standard Sizes: 1/4, 7/32, 3/16, 5/32, 9/64, 1/8, 7/64, 3/32, 5/64, 1/16, .050"
Metric Sizes: 1.5, 2.5, 3.0
Star Tip Sizes: T10, T15, T20



PRO HEX FOLD UP SET - STANDARD

- Standard Sizes: 3/16, 5/32, 9/64, 1/8, 7/64, 3/32, 5/64, 1/16, .050"



PRO HEX FOLD UP SET - XL

- XL Sizes: 1/4, 7/32, 3/16, 5/32, 9/64, 1/8, 7/64, 3/32, 5/64



PRO HEX FOLD UP SET - METRIC/STANDARD COMBO

- Sizes: 1/16, 5/64, 3/32, 7/64, 1/8, 9/64, 5/32, 3/16
- Metric: 1.5, 2.5, 3.0, and a 1/8" flat blade screwdriver



PRO HEX STUBBY 10 PIECE

"L" WRENCH SET - XL

- Short arm design for reaching into tight fitting screws
- Perfect for working around sights & rests
- XL Sizes: 1/16, 5/64, 3/32, 7/64, 1/8, 9/64, 5/32, 3/16, 7/32, 1/4



PRO HEX LIMB MASTER ALLEN WRENCHES

- Long arm hex wrench installed in comfortable molded rubber handle
- Perfect for adjusting limb bolts
- Sold individually in sizes 7/32 and 1/4

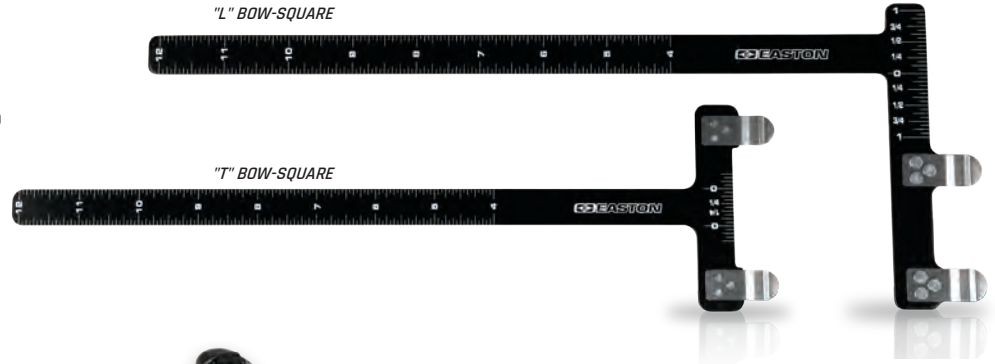


ASB Majesty is a trademark of Angel Co., Ltd. Fix-it Sticks Registered Trademark of Titan Product Development LLC.

TOOLS & SUPPLIES

BOW-SQUARES

- Lightweight, strong aluminum
- Precision laser-etched rule
- Critical for precise bow tuning & set up



RECURVE BOW STRINGER

- Molded rubber-cupped stringer recommended for stringing target recurve bows
- Makes stringing safe and easy



9-PIECE ARROW PREP TOOL KIT

- Innovative kit cleans and abrades the interior shaft surface for proper point adhesion and maximum bond strength
- 9-piece kit fits all sizes of arrow shafts from 4MM to 27/64" diameters



ARCHERY ESSENTIALS™ TOOL KITS

- Kit items save 30% versus items sold separately
- Both kits include a zippered Case Cube that comes with peel-off hook and loop panel to attach to bow cases with fleece-lined interiors

12 AND 8 PIECE KITS

INCLUDES:

- Extra large folding allen wrench set
- Nock installation & removal tool
- Wedge arrow puller
- Zippered Case Cube
- Bowstring wax

- Serving thread
- D-Loop rope
- Broadhead wrench

12-PIECE KIT ADDS:

- D-Loop pliers
- Bow-square-L model
- Small folding allen wrench set
- Arrow prep tool kit

6-PIECE CROSSBOW KIT

INCLUDES:

- Small folding allen wrench set
- Zippered Cube Case
- Rail lube wax
- Wedge arrow puller
- Broadhead wrench
- Scope lens cleaner cloth

12-PIECE PRO SHOP



SHOOTING ACCESSORIES



STAY SHARP™ BROADHEAD CASE

- Grippers ensure broadhead sharpness by supporting ferrules without contacting blades
- Hold six mechanical or fixed-blade broadheads
- Durable ABS body with snap-fit locking polycarbonate end caps
- Compatible with most Deep-Six and standard 8-32 broadheads
- Dimensions: approximately 5"W x 4"H x 2"D

DELUXE ARM GUARD

- Progressive designs molded from durable poly-carbonate material
- Durable elastic straps ensure a snug fit
- Available in oval and "dog" bone shapes
- Colors: blue, red, yellow, and smoke



CHEST PROTECTOR

- Unique comfort-fit design
- Breathable air-mesh construction
- Easy-adjust shoulder
- Sizes: Right and left-handed models: XS, S, M, L, XL, and XXL
- Color: black/white



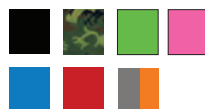
COMFORT FLEX ARM GUARD

- Elastic arm band with adjustable cord locks
- Flexible molded composite material
- One size fits all
- Colors: black



STIFF WRIST SLING

- Clean design
- Vibration reducing molded mount
- Stiff sling material holds its shape for quick access
- Colors: black, camo, green, pink, blue, red, and orange



DELUXE PARACORD DIAMOND WRIST SLING

- Comfortable leather mount
- Deluxe wide cobra braid
- Easy to adjust
- Colors: black, camo, green, pink, blue, red, and orange



NEOPRENE WRIST SLING

- Durable, lightweight neoprene construction
- Easy-adjust strap



COMPETITION QUIVERS

ELITE™ FIELD QUIVER WITH BELT

- European-inspired luxurious design
- Technical synthetic leather construction
- Infinitely adjustable and sturdy, Elite quiver belt uses secure T-style buckle
- Semi-rigid rear-facing compression-molded arrow body eliminates need for separate arrow tubes
- Fleece-lined interior and removable arrow dividers for quiet, customized arrow management
- Integrated bow-square slot and dual accessory attachment rings
- Matching quiver belt included-release pouch sold separately
- Colors: stars & stripes red, blue, carbon black, and white
- Left-hand models only available in carbon black and white



ELITE™ QUIVER BELT

- One size fits most
- T-style buckle
- Included with Elite quivers—also sold separately
- Colors: red, blue, grey, carbon black, and white



Accessory Clip (included)

ELITE™ RELEASE POUCH



Removable Pocket (included)

Release Pouch (sold separately)

ELITE™ TAKEDOWN HIP QUIVER WITH BELT

- Technical sport-fabric construction
- Infinitely adjustable, yet sturdy, Elite quiver belt with T-style buckle for secure operation-included
- Allows quiver body tube to separate from belt loop for easy storage
- Semi-rigid front-facing compression-molded arrow body eliminates need for separate arrow tubes
- Fleece-lined interior and removable arrow dividers for quiet and customized arrow management
- Directional locking snap removable oversized upper magnetic-closure pocket or accessory clip
- Integrated bow-square slot and dual accessory attachment rings
- Matching quiver belt included- release pouch sold separately
- Colors: red, blue, carbon black, and white
- Left-hand models only available in carbon black and white

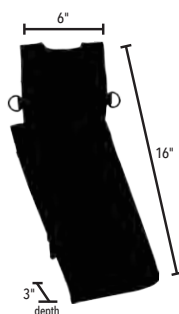


*Modular system can accommodate multiple configurations

COMPETITION QUIVERS



Quiver belt included



DELUXE FIELD QUIVER WITH BELT

- High-denier woven fabric construction
- Semi-rigid rear-facing compression-molded arrow body eliminates the need for separate arrow tubes
- Fleece-lined interior and removable arrow dividers for quiet and customized arrow management
- Adjustable, sturdy Deluxe Quiver belt with T-style buckle included
- Integrated bow-square slot and dual accessory attachment rings
- Release pouch sold separately
- Colors: silver, red, blue, and black
- Left-hand models only available in black and silver



DELUXE QUIVER BELT

- One size fits most
- Innovative hook-and-loop adjustment
- Easy on/off T-buckle connection

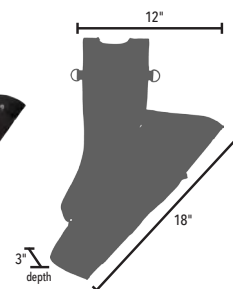
DELUXE RELEASE POUCH



Quiver belt included

DELUXE TAKEDOWN HIP QUIVER WITH BELT

- Allows quiver body tube to separate from belt loop for easy storage
- High-denier woven fabric construction
- Semi-rigid front-facing compression-molded arrow body eliminates the need for separate arrow tubes
- Adjustable Deluxe Quiver Belt with T-style buckle included
- Fleece-lined interior and removable arrow dividers for quiet and customized arrow management
- Upper magnetic-closure pocket
- Integrated bow-square slot and dual accessory-attachment rings
- Colors: silver, red, blue, and black
- Left-hand models only available in black and silver



RECREATIONAL QUIVERS

FLIPSIDE™ 4-TUBE HIP QUIVER WITH BELT

- Innovative design fits both right and left-hand shooters
- Includes one-size-fits-most adjustable quiver belt
- Rugged high-denier POLY construction
- Reversible hook-and-loop pocket for right/left side wear
- Durable injection-molded arrow separator tubes
- Integrated T-square and pen/pencil slots
- Multiple accessory attachment rings
- Colors: black, red, blue, and Realtree Edge®



FLIPSIDE™ 3-TUBE HIP QUIVER

- Innovative design fits both right and left-hand shooters
- Reversible hook-and-loop pocket for right/left side wear
- Rugged high-denier POLY construction
- Stainless steel belt clip attachment
- Integrated accessory attachment grommet
- Durable injection-molded arrow separator tubes
- Integrated T-square slot
- Colors: black, red, blue, and Realtree Edge®



FLIPSIDE™ 2-TUBE HIP QUIVER

- Innovative design fits both right and left-hand shooters
- Rugged high-denier POLY construction
- Stainless steel belt clip attachment
- Durable injection-molded arrow separator tubes
- Colors: black, red, blue, and Realtree Edge®



REPLACEMENT FLIPSIDE™ ARROW TUBE



REPLACEMENT BELT CLIP



Realtree Edge is a trademark of Jordan Outdoor Enterprises, Ltd.

BOW CASES

NEW BOWTRUK™ 4716 & 4015 TRAVEL BOWCASE

- Accommodates two bows up to 47"
- Cordura 1680D Type 6,6 ballistic nylon shell
- Six interior & exterior accessory pockets for bow-sights, gear, and arrows
- Case-cube compatible fleece main compartment
- Dense 360° exterior padding
- Double seatbelt-style bow retainment straps
- Padded carry handle
- Compatible with Easton arrow totes & boxes
- Hybrid hard/soft shell perimeter protection
- Dark grey [Model 4716]
- Tan [Model 4015]
- 47" L X 16" W X 9" H [Model 4716]
- 40" L X 15" W X 9" H [Model 4015]



DELUXE 3615 COMPOUND/RECURVE ROLLER BOW CASE

- Advanced wheeled compact travel case for compound/recurve bows
- Triple field-replaceable roller bearing wheels
- Double seatbelt system to securely anchor bows
- Three internal accessory pockets
- Dimensions [36"Lx15"Wx9"H]
- Compatible with the Easton Deluxe 33" & 36" arrow cases
- Case-cube compatible interior fleece hook-and-loop lining with seatbelt strap bow retention system
- Hybrid hard/soft shell 360° perimeter for maximum contents protection
- Airline travel cover recommended [sold separately]
- Color: black/orange



ROLLER BOWCASE TRAVEL COVERS

- Fits Deluxe 3615 Roller Recurve bow cases
- Custom tailored for specific roller bowcase models
- A must for airline-travel bowcase protection
- Compression-molded semi-rigid bottom
- Premium #10 zippers for maximum strength
- Double wide buckled straps for extra security
- ID card slot
- Water resistant



ELITE 2.0 4717 DOUBLE BOW CASE

- Accommodates two full-size target bows up to 47" in overall length
- Case-cube compatible double-fleece main compartment
- Double or single bow with opposite side clothing storage
- 360° exterior padding
- Dimensions 47"x17"
- Movable hook-and-loop bow anchor system
- Eight interior and exterior accessory pockets with dedicated separate compartments for quivers, stabilizers, and arrow storage
- Compatible with Easton arrow totes & Deluxe 33" & 36" arrow boxes
- Padded shoulder strap and comfortable carry handle
- Available in black/grey color



BOW CASES

DELUXE 4517 BOW CASE

- Seven generously sized interior and exterior pockets for complete storage of bows, arrows, accessories, and range gear
- Compatible with all Easton arrow tote and arrow case models
- Premium oversized #10 zippers with easy-grab pulls
- Cavernous 3.5" case-cube compatible fleece-lined padded interior (case cubes sold separately)
- Fits most bows —interior dimensions 44" x 16"
- Movable bow-anchoring straps for rock-solid bow security
- 360° padding for complete bow protection
- Colors: Realtree® Max-1/lavender



Realtree Max1 is a trademark of Jordan Outdoor Enterprises, Ltd.



MICRO FLATLINE™ 3618

- Accommodates one bow up to 36" in overall length
- Overall dimensions 36" long x 18" high
- Dedicated outer snap-lock mesh accessory pocket
- Premium zippers with easy-grab molded pulls
- Multi-colored front printing design
- Colors, black/grey, grey/red, Realtree® Edge



Realtree Edge is a trademark of Jordan Outdoor Enterprises, Ltd.



GENESIS™ 4014

- Custom tailored for the Genesis compound bow
- Rugged high-denier POLY construction with thick interior padding
- Premium zippers with easy-grab pulls
- Integrated Easton arrow-tote attachment straps
- Exterior mesh accessory pocket
- Colors: Red, Blue, and Black
- 40" L x 14" H



BOWSLICKER™

- Easy, secure carry with patented limb loop design
- Quick and quiet removal
- Keep cams and strings protected from brush
- Fits all compound bows, including parallel limbs, up to 36" axle-to-axle
- Color: Olive Green



Officially Licensed Product
Protected by US Patents:
9,038,878 & 9,310,158



BOW CASES

WORLD CUP™ 4517

- Accommodates one bow up to 45" in overall length
- Overall dimensions 45" long x 17" high
- 9 interior and exterior accessory pockets with dedicated compartments for stabilizers and arrow storage
- Case-cube compatible fleece main compartment
- Compatible with Easton arrow totes and Deluxe 33" and 36" arrow boxes
- Colors coordinate with Easton Deluxe Hip/Field quivers
- Dense 360 degree exterior/corner cam padding
- Re-positionable hook-and-loop bow anchor system
- Padded carry handle
- Shoulder strap included
- Colors: red, black, and blue



WORKHORSE™ 4118

- Accommodates one bow up to 41" in overall length
- Overall dimensions 41" long x 18" high
- Extra-wide 5" side depth to accommodate bow-mounted quivers; maximum inside storage
- Eight interior and exterior accessory pockets with dedicated arrow box compartments
- Case-cube compatible fleece main compartment
- Compatible with Easton arrow totes and Deluxe 33" and 36" arrow boxes
- Re-positionable hook-and-loop bow anchor system
- Dense 360° exterior padding
- Shoulder strap included
- Colors: Charcoal, Realtree® Edge,



Realtree Edge is a trademark of Jordan Outdoor Enterprises, Ltd.

BOW-GO™ 4118

- Accommodates one bow up to 41" in overall length
- Overall dimensions 41" long x 18" high
- Extra-wide 5" side depth to accommodate bow mounted quivers and maximum inside storage
- Four interior and exterior pockets with a dedicated arrow box compartment
- Compatible with Easton arrow totes and Deluxe 33" and 36" arrow boxes
- Colors: Black, Realtree® Edge, olive/grey



Realtree Edge is a trademark of Jordan Outdoor Enterprises, Ltd.

PACKS

CLUB XT™ RECURVE BACKPACK

- Affordable recurve backpack with great features
- High-denier fabric construction and fully adjustable shoulder harness
- Fits up to 25" recurve handles and long limbs
- Arrow tote included
- Colors: grey, blue, red, and black



DELUXE RECURVE BACKPACK

- Convertible design for either backpack or shoulder carry (shoulder strap included)
- Internal storage compartments for sight, stabilizers, arrows, limbs, tools and other accessories
- External side mesh pockets for tripod or water bottle storage
- Front-side zipper pocket for clothing or other items
- Front-side privacy mesh ID slot for business cards
- High-denier woven fabric construction
- Fits up to 27" recurve handles and long limbs
- Arrow tote included
- Compatible with universal rain cover (sold separately)



UNIVERSAL RAIN COVER

- Compatible with Deluxe & Club XT recurve backpacks

BOW CASE ACCESSORIES

CASE CUBES™ BOW CASE

ACCESSORY POCKETS

- Most efficient bow case accessory storage system ever created
- Durable 2.5" deep fabric construction with padded surrounds and clear mesh zippered closure
- Maximize your space by organizing gear in and around your bow inside your case
- Hook-and-loop attachment for customized fit and easy in-and-out accessory storage



QUARTER CUBE
7.5" X 7.5"



CORNER CUBE
7.5" X 10"

HALF CUBE
7.5" X 15"



BOW SLEEVE

- Durable 600D fleece-lined sleeve to protect bow from other gear
- Adjustable for up to 47" bows
- Fits inside all Easton bowcases



STABILIZER SYSTEM SLEEVE

- Durable 600D fleece-lined sleeve and pocket bag to store entire stabilizer system: main rods, side rods, V-bars, weights
- Length adjustable, protects other equipment in the same bow case
- Fits inside all bowcases



DELUXE MOLDED ARROW CASES

- Includes foam arrow dividers
- Holds arrows securely (with or without points)
- Four sizes:
Deluxe 36" (24-arrow) - outside dimensions [36" x 6.5" x 3"]
Deluxe 33" (18-arrow) - outside dimensions [33" x 5" x 3"]
Deluxe Crossbow (12-arrow) - outside dimensions [24" x 6.5" x 3"]
Round Arrow Tote (12-arrow) - adjustable length



CROSSBOW

CROSSBOW SLICKER™

- Fits crossbows from 15" to 30" axle-to-axle
- Rugged, weatherproof fabric
- Ultra-light—weighs less than 8 oz
- Color: Olive Green



Officially Licensed Product
Protected by US Patents:
9,038,878 & 9,310,158



BEGINNER ARCHERY

ARCHERY COMBO PACK

- High quality 6000 fabric hip quiver
- Holds up to 12 arrows
- Integrated belt clip
- Three XX75® size 1816 high-strength 28" arrows
- Finger tab
- Polymer arm guard
- Fits right or left-handed archers
- Colors: Black and Pink



SCOUT 2™

- Durable fiberglass construction
- Over Nock – installed
- Sleeve Point – installed
- 26" or 28"



BEGINNER FINGER TAB

- For right handed archers



BEGINNER BOW

The Easton beginner bow is the perfect set up to get you started shooting archery. Smooth shooting polymer platform and easy-to-handle draw length-to-draw-weight ratio, the 52" bow is ideal for beginners seeking correct form development and accuracy.

- Ambidextrous for right or left-handed archers
- Integrated sight channel
- Custom Dacron™ string
- Ambidextrous arrow rest and sight pin included
- High-strength glass/polymer limbs and advanced polymer riser
- Ideal beginner draw weight range 10-20 pounds
- Max 26" draw
- Made in USA
- Includes: bow, quiver, three arrows, sight, finger protector, and armguard



Kit colors: Black, Pink, and Realtree® Xtra



NOCKS

INDEXABLE NOCKS



4MM G Nock™

Colors: blue, white, green, orange, red, smoke
Throat: Small=0.096, Large= 0.112
Dozen Pack and 100-count Bulk
6 grains



6MM H Nock™

Colors: white, yellow, green, orange, smoke
Throat: 0.111
Dozen Pack and 100-count Bulk
9 grains



6.5MM MicroLite™ Super Nock™

Colors: orange, green, yellow, red, smoke, white
Throat: 0.108
Dozen Pack and 100-count Bulk
8 grains



4MM Microlite™ Nock

Colors: red, green, yellow, white, orange, smoke
Throat: 0.112
Dozen Pack and 100-count Bulk
6 grains



N Nock™

Fits Genesis & 4MM
Colors: red, white, green, orange, grey, yellow
Dozen Pack and 100-count Bulk
17 grains



Pin Nock™

Large or small sizes available
Fits all nock pins, see arrow models for fitment
Colors: blue, pink, green, red, orange, lemon-lime, & crystal
Packaging – Dozen Pack
2 grains



5MM X Nock™

Colors: white, yellow, green, orange, red, smoke
Throat: 0.111
Dozen Pack and 100-count Bulk
9 grains



6.5MM 3D Super Nock™

Colors: black, green, orange, white, crystal, lemon-lime, purple, red, and smoke, pink, blue
Throat: 0.103
Dozen Pack and 100-count Bulk
13 grains



G Pin Nock™

Fits all nock pins, see arrow models for fitment
Colors: blue, green, red, orange, lemon-lime, & crystal
Packaging – Dozen Pack
4 grains



WARNING FOLLOW THESE INSTRUCTIONS TO AVOID PERSONAL INJURY.
SEE WARNINGS AND USE AT WWW.BSAFE.WS OR 877-INFO-ETP (877-463-6387).

CHECK EVERY ARROW, EVERY SHOT

ARROW DAMAGE

Any arrow can be damaged, even when new. A damaged arrow could break upon release and injure you or a bystander. If you have any reason to believe that an arrow has been damaged, DISCARD THE ARROW. Damage to an arrow shaft, or any of its components, may occur from improper transport, handling, or use; impacts with hard objects or other arrows; or, after being shot into a game animal. No list can cover all possible conditions and situations that may cause damage. Use good judgment and common sense, as well as follow the warnings and instructions below, to determine if your arrow has been damaged in any way. **WARNING! NEVER SHOOT A DAMAGED ARROW.**

ARROW USE PRECAUTIONS

Before each shot (including the first shot of a new arrow) carefully inspect each arrow shaft and all arrow components to see that they have not been damaged. Place the arrow between your thumb and fingers, and using your other hand to slowly rotate the shaft, run your fingertips along the entire arrow length, feeling and looking closely for nicks, cracks, splits, dents, or other marks that could indicate the shaft has been damaged (see arrow inspection information at www.eastonarchery.com/warning-use/). If your arrow is crested, inspect for damage on the crest surface and for any soft spots under the crest wrap. You may need to remove the cresting to make a thorough inspection. If damage is present, DISCARD THE ARROW. **WARNING! NEVER SHOOT A DAMAGED ARROW.**

A loose or damaged nock may indicate a damaged arrow shaft or otherwise be dangerous. Before each shot, inspect the nock for damage and check that it is fully seated, and fits tightly in the shaft. Apply twisting pressure to see if the nock turns easily. If the nock has backed out of the arrow or turns easily, inspect for cracks in the arrow shaft. If there are cracks in the arrow shaft, or if the nock is loose or is damaged, DISCARD THE ARROW. **WARNING! NEVER SHOOT AN ARROW WITH A LOOSE OR DAMAGED NOCK.**

BOW INSPECTION

Before shooting any arrow, it is critical to inspect your bow, including all components, to be sure that it is properly adjusted and in good working order. Arrows should only be used with bows that have a correct pull weight and draw length (see arrow selection chart at www.eastonarchery.com/shaft-selector/). Selecting the correct arrow and arrow length for the bow is the responsibility of the shooter, and failure to do so could result in personal injury and/or equipment damage.

WARNING! NEVER SHOOT AN ARROW WITH AN IMPROPERLY ADJUSTED OR DAMAGED BOW.

ADDITIONAL TESTS FOR CARBON ARROWS

When checking carbon arrows, perform the following additional tests:

1. Grasp the shaft just above the point and below the nock, then flex the arrow in an arc (bending it away from you and others) with a deflection of 1 to 2 inches (2.5 to 5 cm), and feel, look and listen for cracking

(Figure 1). Perform this test 4 to 6 times, rotating the arrow slightly between each flex until you have gone around the entire arrow. If you hear or feel cracking, the carbon has been damaged, DISCARD THE ARROW. **WARNING! NEVER SHOOT A DAMAGED ARROW.**

2. While still holding the point and fletching ends of the arrow, twist the shaft in opposite directions (Figure 2). If the arrow "relaxes" or twists easily, the carbon has been damaged. DISCARD THE ARROW.

WARNING! NEVER SHOOT A DAMAGED ARROW.

A damaged arrow could break upon release and injure you or a bystander. If you have any reason to believe that an arrow has been damaged, DISCARD THE ARROW. **WARNING! NEVER SHOOT A DAMAGED ARROW.**

CARBON ARROW CUTTING

Only cut a carbon arrow using a high-speed arrow cut-off saw. Using any other saw or cutting device may cause damage to the arrow. If an arrow has been cut without using a high-speed arrow cut-off saw, DISCARD THE ARROW. **WARNING! NEVER SHOOT A DAMAGED ARROW.**

SOLVENTS

CAUTION: When removing fletchings, or for any other reason, do not soak any carbon arrow shaft in solvents. This can weaken the resin that bonds the carbon fibers. (For directions on arrow set up, refer to the Easton Tuning Guide.)

WARNING! NEVER SHOOT A DAMAGED ARROW.

To reduce your risk of serious injury or death, you must read and understand all safety warnings and instructions. If you do not understand these instructions, or cannot adequately perform the above tests, STOP and seek appropriate assistance before shooting any arrow.



Figure 1



Figure 2



WARNING: Cancer and Reproductive Harm — www.P65Warnings.ca.gov

Some of the products listed in this Product Guide may be subject to California Proposition 65 warnings requirements. See product packaging or website for specific warning information. This Product Guide is intended for informational purposes only, not a solicitation for product sales.

TARGET SHAFT MODELS

Aluminum/Carbon	Materials/Construction	Inserts	Points	Nock System	Nock Type	Weight Tolerance	Straightness ¹	Color/Finish	Sizes
X10™	High-strength carbon fiber bonded to a precision 7075 alloy core tube —barreled shaft	N/A	X10 Ballistic Tungsten Break-off or X10 Stainless Steel Break-off	X10	Pin Nocks X10 Overnock	±0.5 grains	±.0015"	Polished Black Carbon	1000, 900, 830, 750, 700, 650, 600, 550, 500, 450, 410, 380, 350, 325
X10™ PROTOUR™	High-strength carbon fiber bonded to a precision 7075 alloy core tube —single-taper shaft	N/A	X10 Ballistic Tungsten Break-off or X10 Stainless Steel Break-off	X10	Pin Nocks	±0.5 grains	±.0015"	Polished Black Carbon	770, 720, 670, 620, 570, 520, 470, 420, 380, 340
A/C/E®	High-strength carbon fiber bonded to a precision 7075 alloy core tube —barreled shaft	N/A	4MM HL	4MM	Pin Nocks or Direct Fit	±0.5 grains	±.0015"	Polished Black Carbon	(1250, 1100) ² , 1000, 920, 850, 780, 720, 670, 620, 570, 520, 470, 430, 400, 370
PROCOMP™	High-strength carbon fiber bonded to a precision 7075 alloy core tube —parallel shaft	N/A	4MM HL	4MM	Pin Nocks or Direct Fit	±0.5 grains	±.0015"	Polished Black Carbon	1150, 1000, 880, 810, 710, 660, 610, 570, 520, 470, 420, 380, 340, 300, 250
Carbon	Materials/Construction	Inserts	Points	Nock System	Nock Type	Weight Tolerance ³	Straightness ²	Color/Finish	Sizes
AVANCE™	Uniform Spine Acu-Carbon	NA	4MM ML	4MM	Pin Nocks or Direct Fit	NA	±.0025	Black, Smooth-matte Finish	340, 400, 450, 500, 550, 600, 660, 730, 810, 900, 1000, 1150, 1400, 1600, 1800, 2000
AVANCE SPORT™	Uniform Spine Acu-Carbon	NA	4MM ML	4MM	Pin Nocks or Direct Fit	NA	±.005	Black, Smooth-matte Finish	340, 400, 450, 500, 550, 600, 660, 730, 810, 900, 1000, 1150, 1400, 1600, 1800, 2000
INSPIRE™	Small diameter pultruded carbon	NA	4MM Zinc 5MM Zinc	4MM 5MM	Direct Fit	NA	NA	Black, Smooth-matte Finish	2000, 1800, 1600, 1400, 1200, 1000, 900, 750, 630, 570
VECTOR	Multi layered wrapped Carbon Fiber	NA	4MM	4MM, Zinc	G Nock	NA	NA	Black, Smooth-matte Finish	600, 800, 1000, 1200, 1400
SUPERDRIVE MICRO	Multi-layer wrapped Carbon fiber	NA	One-piece	4MM HL	Pin Nocks or Direct Fit		±.005	Black, Smooth-matte Finish	325, 375, 425, 475, 525, 575, 625, 675, 750, 850, 950
SUPERDRIVE 19™	Multi-layer wrapped Carbon fiber	NA	One-piece	4MM, or G Pin Nock	Pin Nocks or Direct Fit	±1 grains	±.002"	Black, Smooth-matte Finish	460, 380, 330
SUPERDRIVE 23™	Multi-layer wrapped Carbon fiber	40 gr.	One-piece	4MM 6.5MM	Pin Nocks or Direct Fit	±1 grains	±.003"	Black, Smooth-matte Finish	475, 375, 325
SUPERDRIVE 25™	Multi-layer wrapped Carbon fiber	50 gr.	One-piece	4MM 6.5MM	Pin Nocks or Direct Fit	±1 grains	±.002"	Black, Smooth-matte Finish	290
SUPERDRIVE 27™ SUPERDRIVE 27™ PRO	Multi-layer wrapped Carbon fiber	NA	One-piece	4MM 6.5MM	Pin Nocks or Direct Fit	NA	±.005" ±.002"	Black, Smooth-matte Finish	270
Aluminum	Aerospace Alloy	Inserts	Points	Nock System	Nock Type	Weight Tolerance ³	Straightness ¹	Color/Finish	Sizes
RX7™	7178-T9	NA	NIBB or One-piece Bullet	6.5MM	Direct Fit	±3/4%	+ .001"	Hard-Anodized Silver and Blue	23-420, 22-475, 21-525
X² 3™ X² 7™	7178-T9	RPS Insert	NIBB or One-piece Bullet	6.5MM	Direct Fit	±3/4%	+ .001"	Hard-Anodized Silver and Black	2312, 2314, 2315, 2318 2712
ECLIPSE™	7178-T9	N/A	NIBB or One-piece Bullet	4MM 6.5MM	Direct Fit	±3/4%	±.001"	Hard-Anodized Polished Black	1514, 1614, 1714, 1814, 1914, 2014, 2114, 2213, 2214, 2314, 2413, 2512, 2613
GENESIS™	7075 -T9	N/A	One-piece Point	4MM N Nock	Direct Fit	±2.5 grains	±.005"	Hard-Anodized Bright Blue, Orange, Black	1820
XX75 PLATINUM® PLUS	7075-T9	RPS Insert	NIBB, One-piece Bullet, or RPS Point	4MM 6.5MM	Direct Fit	±1%	±.002"	Hard-Anodized Platinum Grey	1416, 1516, 1616, 1716, 1816, 1913, 1916, 2013, 2016, 2114, 2213
JAZZ®	7075 -T9	RPS Insert 1716 & up	NIBB, One-piece Bullet, or RPS Point	4MM 6.5 MM	Direct Fit	±2%	±.005"	Hard-Anodized Black/Silver	1214, 1416, 1516, 1616, 1716, 1816, 1916, 2016

1 Guaranteed straight to more stringent standards than ATA/ASTM methods.

2 Guaranteed to meet or exceed similar carbon-industry straightness specifications.

3 Grains-per-shafts in a dozen bundle.

Eclipse and Platinum Plus sizes in italics use UNI System and ®/™ Registered Trademark of Easton.

LIMITED WARRANTY

The Easton arrow shaft limited warranty covers any defects in material and/or workmanship for one year from the original owner's date of purchase. Arrow shafts that are defective will be replaced by your local Easton dealer with proof of purchase. Damage caused by impact from other arrows, impact with hard objects, improper cleaning or fletching, or from normal wear and tear is not covered by Easton's limited warranty. The limited warranty also does not cover damage resulting from your failure to follow Easton's written instructions. For written instructions and warranty details see www.eastonarchery.com.

ARCHERY EXPERTS

For more information on arrow preparation and assembly, visit: WWW.EASTONARCHERY.COM

ALLOY SHAFT AND COMPONENT SPECIFICATIONS

Size	Shaft Weight		Spine @ 28" Span	Minimum ¹ Stock Length		UNI System			Adjustable Points	NIBB Point	One-piece Bullet Point	RPS Insert Alum.	RPS Point Size
	XX75	X7		XX75	X7	UNI Bushing	X Nock Bushing	Super UNI Bushing					
	Grains per Inch		Deflection in Inches	Inches		Grains	Grains	Grains	Grains	Grains ²	Grains	Grains ²	Grains
1214	5.9	—	2.501	25.5	—	—		—	—	—	45	—	—
1416	7.2	—	1.684	26.25	—	2		—		46	52	—	—
1514	—	6.8	1.379	—	25	5		—	—	61 ⁹	—	—	—
1516	7.3	—	1.403	26.75	—	3		—		48	54	—	—
1614	—	7.7	1.153	—	26.75	5		—	—	51	—	—	—
1616	8.4	—	1.079	27.5		5				56	63		
1713	7.4	—	1.044	29	—	7		—	—	54	—	—	—
1714	—	8.1	0.963	—	27.75	7		—	—	56	—	—	—
1716	9.0	—	0.880	29	—	7		—		60	68	10	17/64
1814	—	8.6	0.799	—	29.5	8		—	—	60	—	—	—
1816	9.3	—	0.756	29	—	8	4	—		63	74	12	9/32
1820	12.2	—	0.592	29	—	—		—		—	59	—	—
1913	8.3	—	0.733	31	—	9		—		64	—	18	5/16
1914	—	9.3	0.658	—	29.5	9		—	—	64	—	—	—
1916	10.0	—	0.623	30	—	9	7	—		72	82	16	5/16
2013	9.0	—	0.610	32	—	—		5	—	68	—	21	5/16
2014	—	9.6	0.579	—	31½	—		5	100	71	—	—	—
2016 (500)	10.6	—	0.531	31	—	—		4	—	—	90	20	5/16
2018	12.3	—	0.64	30.5				4			90	19	5/16
2114	9.9	9.9	0.510	30	31	—		7	—	78	100	25	5/16
2117 (400)	12.0	—	0.407	31.5	—	—	—	7			100	25	5/16
2213	9.8	9.9	0.458	30.5	32	—		9	—	88	100	30	11/32
2214	—	10.4	0.425	—	31.9	—		9	100	103	100	—	—
2215	10.7	9.5	0.419	31.5	—	—		9	—	—	100	30	11/32
2216	12.0	—	0.376	32	—	—		9	100	—	100	29	11/32
2219	13.8		0.337	32	—	—		9			100	29	11/32
2312	—	9.5	0.423	—	31.75	—		11	—	99	100	37	11/32
2314	10.7	10.8	0.391	32	32.25	—		10	100	—	100	34	11/32
2315 (340)	11.7	11.7	0.342	32	32.6	—		11	100	—	100	37	11/32
2317	13.3	—	0.297	32	32.75	—		11	100	—	100	37	11/32
2318	—	13.7	0.300	—	32.75	—		11	—	—	200	—	—
2413	10.4	10.5	0.365	—	34	—		12	—	110	100	40	11/32
2512	—	10.3	0.321	—	33	—		15	—	108	100	52	11/32
2613	—	11.5	0.265	—	33	—		17	—	—	150	58	3/8
2712	—	11.3	0.260	—	33	—		19	200	—	150/300	—	—

— Indicates not available

¹ Length is approximate stock shaft length for each size.

² NIBB point grain weights are ±0.5 grain. All other components are ±1 grain

ARCHERY EXPERTS

For more information on arrow preparation and assembly, visit: WWW.EASTONARCHERY.COM

ARROWS OF CHAMPIONS SINCE 1922

